

The Con-way Inbound Advantage

Better control of your supply chain



Con-way
FREIGHT



The Con-way Inbound Advantage

Helps You Build a
Competitive Edge.



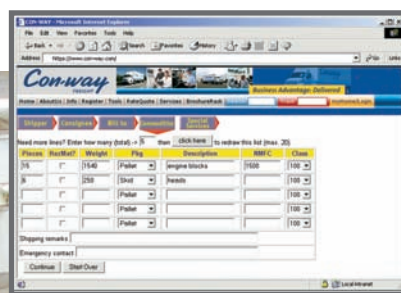
In today's just-in-time environment, businesses that specify Con-way for inbound shipments can increase supply-chain control, reduce costs and increase profits. By specifying Con-way for inbound shipments, you can:

- Ensure that you receive the **discounted price** you negotiated for freight services.
- **Reduce congestion at your receiving dock** by consolidating multi-vendor LTL shipments.
- **Improve receiving and production schedules** through better inbound shipment planning.
- **Improve inventory control and purchasing schedules** based on reliable transit times.
- **View inbound shipments and measure historical transaction data** by using Con-way's website and e-business functions.
- **Improve customer order fill rates** with reliable delivery and inventory management.
- **Establish more economic order quantities** with Con-way's consistent delivery performance.
- **Reduce costs** associated with management of multiple carriers.

Flexible e-business functions from Con-way empower you to:

- **Issue electronic bills of lading (eBOLs)** from your office, applying your unique record codes and shipping instructions.
- **Email eBOLs to vendors.**
- **Email eBOLs to Con-way** via the Con-way website to trigger a shipment pickup.
- **Receive automatic pickup confirmation.**
- **Track and trace shipments** as they move to your dock – either an individual shipment or manifest showing all inbound shipments.

- **Receive shipment status emails.**
- **Generate a rate quote** based on your specific price agreement with Con-way.
- **Determine the Con-way standard transit time** and origin service center for a new vendor.
- **Access historical inbound and outbound** shipping information, including:
 - 13-month activity showing summary or individual shipment detail, including number of shipments, weights, miles and payment type.
 - Reports on Con-way's on-time delivery performance.



What you know ... you can manage.

Information about inbound shipments is key to effectively managing your supply chain. Whether through our award-winning website, www.con-way.com/freight, EDI technology, or XML links ... Con-way provides the information you need, when you need it. The result: optimized product movement within your supply chain.



- Lane analysis, showing your shipment patterns by origin and destination.
- A listing of your top 20 vendors and customers, ranked by shipment count for the last month, last 12 months and year to date.
- **Create a log-in page** that always displays your preferred shipping tool.

Use inbound consolidation programs to push control further up the supply chain.

When you have multiple vendors in a distant market, combine LTL shipments in the region of origin to build efficient truckload shipments.

- **Con-way has over 460 service centers** throughout the United States and Canada, providing broad flexibility in establishing optimal assembly points.
- **Con-way can arrange truckload routings** to your final destinations.
- **You can issue BOLs** to specify inbound routings from your vendors.



A higher level of security.

Con-way offers two guaranteed LTL shipping options to all points served direct in the U.S. and Canada. For shippers using the current Con-way CNWY-599 Tariff, guaranteed service is automatic and FREE.* Not on the current CNWY-599 Tariff? Pay only a 20% premium on your already discounted rate. With either option, **it's on time or it's on us!**®**



You can specify Con-way for inbound shipments by doing any of the following:

- **Send a letterhead routing** to your vendors.
- **On your purchase order**, specify shipment(s) via Con-way.
- **Complete an electronic bill of lading (eBOL)**, and email it to your vendor via the Con-way website.
- **Issue an electronic pickup order** on the Con-way website.
- **Ask your Con-way account executive** to help you construct a routing order.



**The shipment must be ready for pickup by 5 p.m. local time. For consideration of a claim, the debtor on the shipment must file a service-failure form on the Con-way website within seven days after the scheduled date of delivery.*

***Points not served direct, temperature-controlled items, shipments marked for, or which require, liftgate service, hazardous material shipments, and shipments affected by acts of God are excluded from Con-way guaranteed service.*



Business Advantage : Delivered

Freight

Truckload

Intermodal

Distribution

Supply Chain Management

Con-way

www.con-way.com

ISO•9001 & 14001